



INDOFINE Chemical Company, Inc.

121 Stryker Lane, Bldg. 30, Suite 1 • Hillsborough, NJ 08844 • U.S.A.

Phone: (908) 359-6778 • FAX: (908) 359-1179

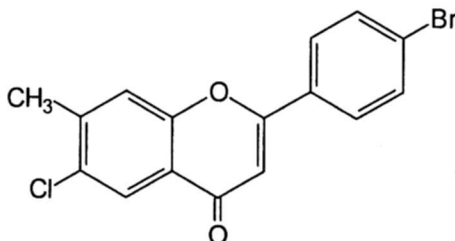
website: www.indofinechemical.com

e-mail: chemical@indofinechemical.com

CERTIFICATE OF ANALYSIS

Cat No.: 19-316

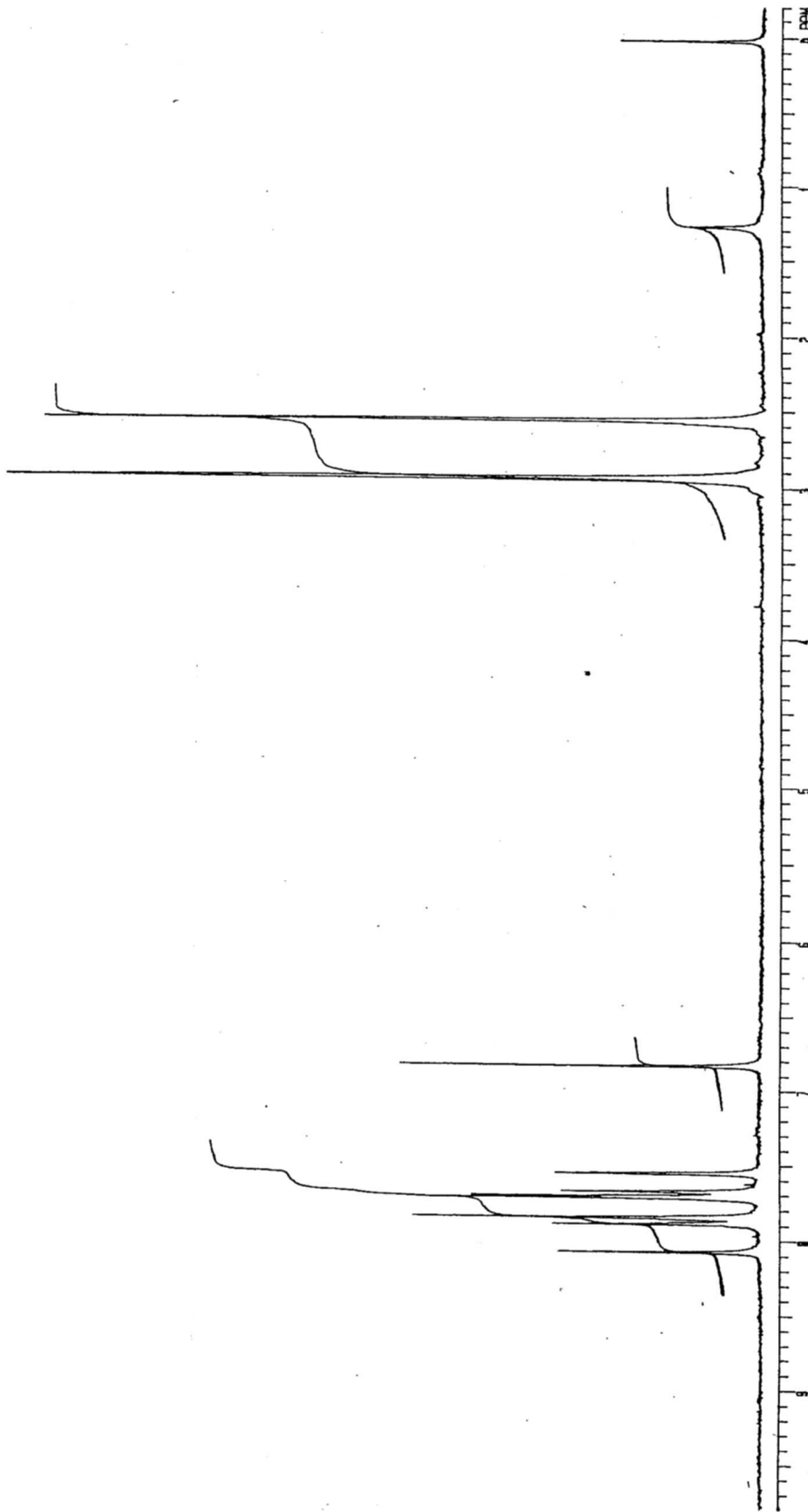
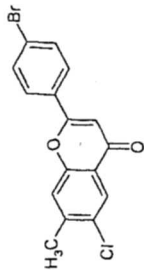
<u>Product:</u>	4'-BROMO-6-CHLORO-7-METHYLFLAVONE
<u>Lot Number:</u>	0008220
<u>Molecular Formula:</u>	C ₁₆ H ₁₀ BrClO ₂
<u>Molecular Weight:</u>	349.61
<u>Melting Point:</u>	239-240.5°C
<u>Appearance:</u>	Light cream colored powder
<u>Solubility:</u>	Soluble in Chloroform
<u>NMR Spectrum:</u>	Enclosed
<u>IR Spectrum:</u>	Enclosed
<u>Purity:</u>	98+%





INDOFINE Chemical Company, Inc.
121 STRYKER LANE
BLDG. 30, SUITE 1
HILLSBOROUGH, NJ 08844

Catalog no.: 19-316
Product name: 4'-Bromo-6-chloro-7-methylflavone
Lot No.: 0008220





INDOFINE Chemical Company, Inc.

121 Stryker Lane, Bldg. 30, Suite 1 • Hillsborough, NJ 08844 • U.S.A.

Phone: (908) 359-6778 • FAX: (908) 359-1179

website: www.indofinechemical.com

e-mail: chemical@indofinechemical.com

Catalog no.: 19-316
Product name: 4'-Bromo-6-chloro-7-methylflavone
Lot No.: 0008220

